



## 10 Gas Street

Platt Bridge, Wigan, WN2 5LT

**£695 PCM**



Sapphire Homes are delighted to offer For Rent this spacious 2 bedroom mews in popular area of Wigan close to transport links, schools and local amenities whilst also being with commutable distance of Wigan, Leigh and Aston town centres via bus routes. The property comprises of 2 spacious bedrooms, lounge with kitchen / dining room with modern and family bathroom with shower over bath. The property has carpets and vertical blinds throughout and the neutral decor only add to the character of this property. There is an allocated parking space, Electric Heating and Double Glazing throughout. Early viewing is a must. No Smoking.



## GROUND FLOOR

Entrance / Porch

Lounge

Kitchen / Diner

## FIRST FLOOR

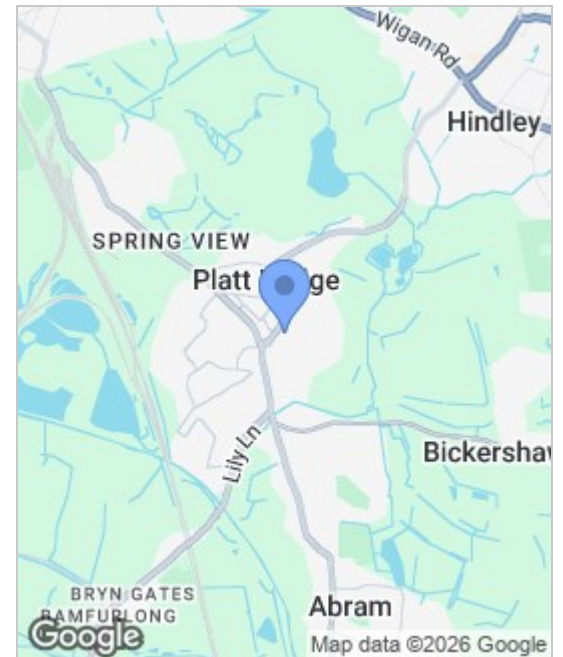
Master Bedroom

Bedroom 2

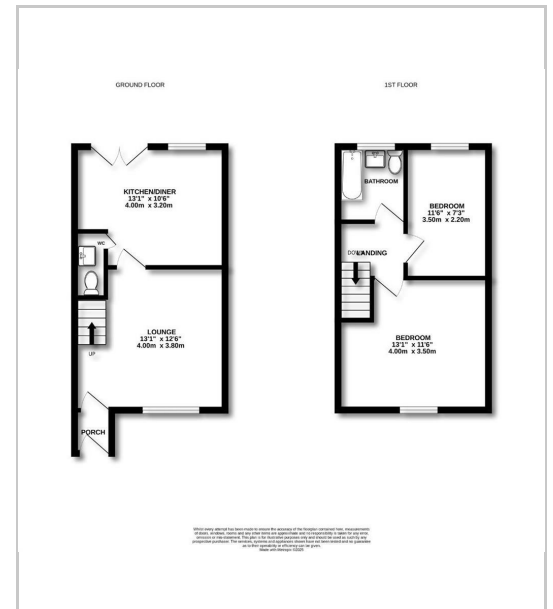
Bathroom

## EXTERNAL

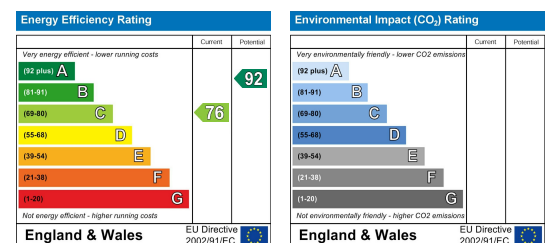
## Area Map



## Floor Plans



## Energy Efficiency Graph



These particulars, whilst believed to be accurate are set out as a general outline only for guidance and do not constitute any part of an offer or contract. Intending purchasers should not rely on the representation of fact, but must satisfy themselves by inspection or otherwise as to their accuracy. No person in this firm's employment has the authority to make or give any representation or warranty in relation to the property.



Sapphire Homes (North) Ltd 80 Market Street, Wigan WNI 1HX  
 T 01942 494944 E info@sapphirehomes.co.uk W www.sapphirehomes.co.uk VAT 183 759 366

*specialists in sales, Lettings & Property Investments*